



TAKE YOUR CESSNA HOME FOR SERVICE AT THE SIGN OF THE CESSNA SHIELD

# single-engine SERVICE LETTER

MARKETING DIVISION • CESSNA AIRCRAFT COMPANY  
WICHITA, KANSAS 67201 • CABLE ADDRESS / CESSCO WICHITA

September 19, 1977

SE77-35

**SUBJECT:** MUFFLER SUPPORT MODIFICATION

**AIRCRAFT APPLICABILITY:** 1971 thru 1977 Model 177RG/Cardinal RG Series Aircraft

Serial numbers ... 177RG0001 thru 177RG1122  
177RG1124 thru 177RG1134  
F177RG0001 thru F177RG0177

REASON FOR LETTER:

The left hand forward muffler support has been deleted from mufflers installed on production Cardinal RG aircraft to reduce vibration stresses and provide improved muffler service life.

It is recommended that this support also be removed from earlier in service aircraft within the next 100 hours of operation. (Reference attached Figure 1)

PARTS INFORMATION:

The following parts are required to accomplish the support removal, and are available through the Cessna Dealer Organization at the suggested list prices shown.

<u>Part Number</u>	<u>Description</u>	<u>Price</u>
AN3-4A	Bolt	\$ 6.42 (S)/100
MS20074-04-06	Bolt	\$ .63 (S) ea.
MS20364-1032C	Nut	\$15.60 (S)/100
MS21919DG40	Clamp	\$ .52 (S) ea.
0550100-6	Bracket	\$ 1.71 (S) ea.

\*\*\*\*\*

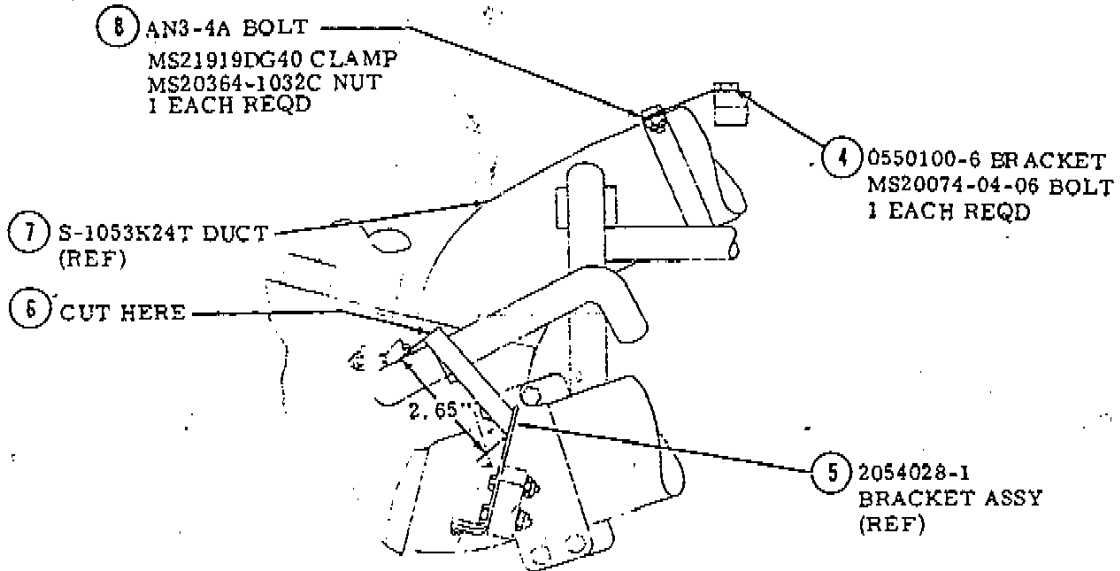
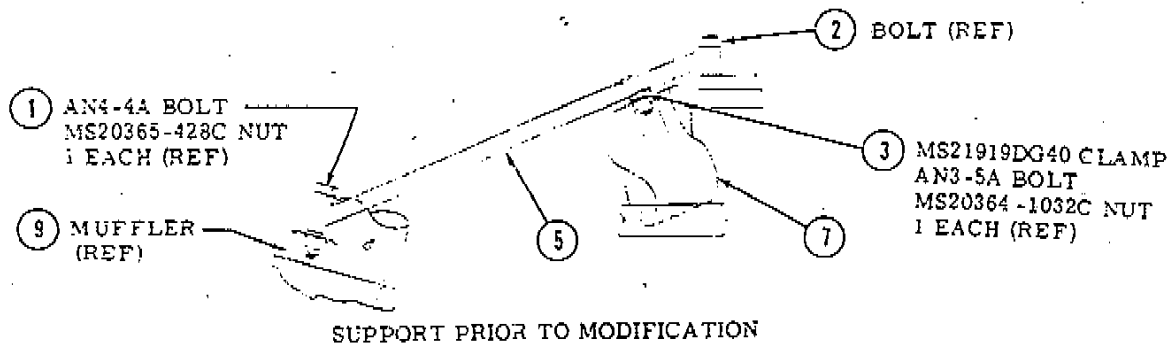
(Owner Notification System - No. 1)

ALL PRICES SUBJECT TO CHANGE WITHOUT NOTICE

CESSNA AIRCRAFT COMPANY

COPYRIGHT © 1977 CESSNA AIRCRAFT COMPANY

THERE ARE MORE CESSNAS FLYING THAN ANY OTHER MAKE



**MODIFICATION INSTRUCTIONS:**

1. Remove bolt and nut (1) securing support bracket (5) to muffler (9).
2. Remove bolt (2) securing support (5) to the engine.
3. Remove bolt and nut (3) securing clamp (3) to duct (7).
4. Cut the bracket assy (5) at the 2.65" dimension (6).
5. Install bracket (4) on engine with bolt (4).
6. Locate clamp (8) on duct (7) and secure to bracket (4) with bolt and nut (8).
7. Modified bracket becomes a new part number 2054028-3.

Figure 1. L. H. Forward Muffler Support Modification (177RG)



"TAKE YOUR CESSNA HOME FOR SERVICE AT THE SIGN OF THE CESSNA SHIELD"

# CUSTOMER CARE OWNER ADVISORY

MARKETING DIVISION / CESSNA AIRCRAFT COMPANY / WICHITA, KANSAS 67201 / CABLE ADDRESS - CESSCO WICHITA

January 28, 1980

*done  
6/1/83*

SE80-6A

Dear Cessna Owner:

An improved brace system which attaches the aft end of both exhaust mufflers to the engine sump is now available.

It is recommended that the new brace system be installed on your aircraft to improve the security and service life of the center and rear muffler braces and throttle control brackets.

For further information, contact your Cessna Dealer referencing Service Information Letter SE80-6.

Your affected aircraft serial and registration number is shown on the mailing label.

\* \* \* \* \*

CESSNA SINGLE ENGINE  
CUSTOMER SERVICES



"TAKE YOUR CESSNA HOME FOR SERVICE AT THE SIGN OF THE CESSNA SHIELD"

# SINGLE ENGINE CUSTOMER CARE SERVICE INFORMATION LETTER

MARKETING DIVISION / CESSNA AIRCRAFT COMPANY / WICHITA, KANSAS 67201 / CABLE ADDRESS - CESSCO WICHITA

January 21, 1980

SE80-6

*done 6/1/83*

SUBJECT: MUFFLER BRACE

AIRCRAFT APPLICABILITY: Cardinal RG

Serial numbers . . . . .  
I77RG0001 thru I77RG1366  
F177RG0001 thru F177RG0177

The brace system which attaches the aft end of both exhaust mufflers to the engine sump has been improved.

It is recommended that the new brace system be installed on in service aircraft to improve the security and service life of the center and rear muffler braces and throttle control brackets.

Service Kit SK177-38 contains all the parts and instructions necessary to install the above improvement on affected aircraft. The kit is available through the Cessna Dealer Organization. The suggested list price is \$87.80 (S).

A copy of the related Owner Advisory is attached and is being sent to registered owners.

\* \* \* \* \*

(Owner Notification System - No. 1)

ALL PRICES SUBJECT TO CHANGE WITHOUT NOTICE

CESSNA AIRCRAFT COMPANY



# SERVICE

SK177-38  
NOVEMBER 22, 1978

# Kit

**Title** MUFFLER BRACE MODIFICATION



MODELS AFFECTED

177RG  
F177RG

SERIALS AFFECTED

177RG0001 thru 177RG1366  
F177RG0001 thru F177RG0177

**PARTS LIST:**

QUANTITY	PART NUMBER	NOMENCLATURE
<i>new</i> 1	2009014-2	Bracket
2	AN4-7	Bolt
4	AN960-416	Washer
1	2054030-8	Bracket <i>rod</i>
1	2054030-9	Bracket <i>rod</i>
2	MS21045-4	Nut
1	2009014	Blueprint

**CHANGE IN WEIGHT AND BALANCE:**

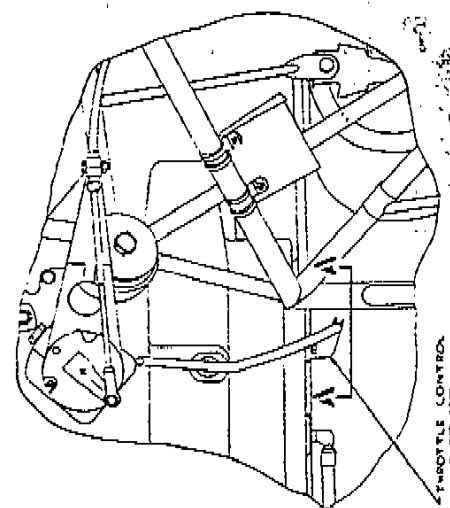
MODEL - SERIALS	WEIGHT INCREASE	ARM	MOMENT	INDEX
177RG - 177RG0001 thru 177RG60787	.1	30.0	3.0	.003
F177RG - F177RG0001 thru F177RG0138	.1	30.0	3.0	.003
177RG - 177RG0788 thru 177RG1366	.1	23.0	2.3	.002
F177RG - F177RG0139 thru F177RG0177	.1	23.0	2.3	.002



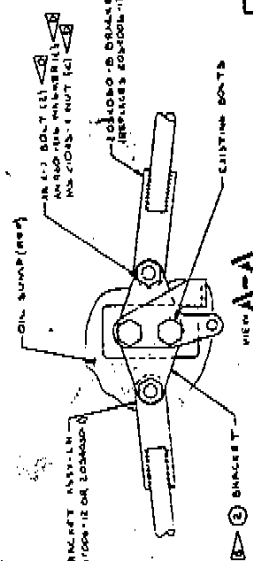


NOTES:  
 1- MOD KIT IS SUITABLE FOR  
 AIRCRAFTS ADPT WITH THE  
 FOLLOWING SERIALS:  
 25870001 THROUGH 25870010  
 25870011 THROUGH 25870020  
 25870021 THROUGH 25870030

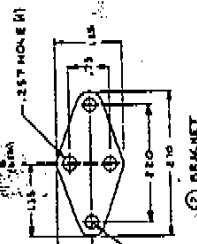
INSTALLATION INSTRUCTIONS:  
 A. REMOVE (DISCARD) EXISTING MUFFLER BRACKETS  
 B. REMOVE (DISCARD) EXISTING MUFFLER BRACKET  
 C. INSTALL THE -2 BRACKET TO THE THROTTLE  
 CONTROL BRACKET TO THE OIL PUMP USING  
 THE EXISTING HARDWARE  
 D. INSTALL THE HARDWARE  
 E. ATTACH THE NEW BRACKETS TO THE -2 BRACKET  
 USING ANTI-ROST (L), ANTI-48 WASHER (L) &  
 ANTI-ROST-NUT (L)



1 MOD KIT INSTL - MUFFLER BRACKETS



2009014-2



4130 sheet  
 .100 TOL

SEE SEPARATE PL FOR LIST OF MATERIAL	
ITEM NO.	QTY
1	1
2	1
3	1
4	1
5	1
6	1
7	1
8	1
9	1
10	1
11	1
12	1
13	1
14	1
15	1
16	1
17	1
18	1
19	1
20	1
21	1
22	1
23	1
24	1
25	1
26	1
27	1
28	1
29	1
30	1
31	1
32	1
33	1
34	1
35	1
36	1
37	1
38	1
39	1
40	1
41	1
42	1
43	1
44	1
45	1
46	1
47	1
48	1
49	1
50	1
51	1
52	1
53	1
54	1
55	1
56	1
57	1
58	1
59	1
60	1
61	1
62	1
63	1
64	1
65	1
66	1
67	1
68	1
69	1
70	1
71	1
72	1
73	1
74	1
75	1
76	1
77	1
78	1
79	1
80	1
81	1
82	1
83	1
84	1
85	1
86	1
87	1
88	1
89	1
90	1
91	1
92	1
93	1
94	1
95	1
96	1
97	1
98	1
99	1
100	1