

SERVICE

Kit

SK150-46
MARCH 31, 1976

Title CIRCUIT BREAKER REPLACEMENT



MODELS AFFECTED

150M
172M
177B
177RG
180J
182P
A185F
188B
U206F
207
210

SERIALS AFFECTED

NOTE: All serials requiring
spares replacement of S1596-60L
circuit breaker.

PARTS LIST:

QUANTITY	PART NUMBER	NOMENCLATURE
1	✓ AN515-8R4	Screw (177RG)
1	✓ S1707-60	Circuit Breaker (All Models)
1	✓ DEV121427-1	Jumper (All Models Except 150 & 172)
1	✓ DEV121427-2	Spacer (All Models Except 150 & 188)
1	✓ DEV121427-3	Spacer (150)
1	✓ DEV121427-4	Spacer (188)
1	✓ DEV200080-1	Buss Bar (177RG)
1		Installation Instructions

CHANGE IN WEIGHT AND BALANCE: Negligible

(NET CHANGE)

1. DESCRIPTION OF INSTALLATION.

a. (Refer to figure 1.) Installation of this kit consists of:

- (1) Removing existing alternator 60 amp circuit breaker from instrument panel.
- (2) Modifying bus bar to accomodate new circuit breaker.
- (3) Installing and connecting a new circuit breaker.

2. INSTALLATION INSTRUCTIONS.

NOTE

Refer to the applicable Cessna Service Manual as a guide.

a. (Refer to figure 1.) Existing Circuit Breaker Removal.

- (1) Place master switch in OFF position.
- (2) Remove or disconnect electrical connections from existing alternator 60 amp circuit breaker.
- (3) Remove nut securing circuit breaker to instrument panel and cover (12 & 13).

- (4) Remove and discard existing circuit breaker.
- b. (Refer to figure 1.) Bus Bar Modification.
- (1) (For Models 150 & 172) Bend bus bar (1), as shown in detail C-C, to fit circuit breaker (9) as circuit breaker is mounted through instrument panel.
 - (2) (For all models except 150, 172 & 177RG) Trim end of bus bar (2) to .25" hole margin.
 - (3) (For Model 177RG) Cut off bus bar (5) near alternator field circuit breaker (6) and trim to .25" hole margin.
- c. (Refer to figure 1.) New alternator circuit breaker installation.
- (1) Secure nut (10) against case of circuit breaker (9) "finger tight" as shown in view B-B.
 - (2) Install circuit breaker (9) as shown, connecting lower terminal to bus bar (1) for models 150 and 172 or jumper (8) for all other models, and securing with lock washer (16) and screw (17).

NOTE

Also connect bus bar (4) using screw (7) in place of circuit breaker screw when installing on 177RG.

- (3) Secure circuit breaker (9) to instrument panel (12) and cover (13) with correct spacer (15) as shown and knurled nut (14).

NOTE

Cover (13) not applicable to Model 188.

- d. Operational Check-out.
- (1) With circuit breaker button pushed in, place master switch in the ON position and start engine. If circuit breaker button pops out, shut engine down. Place master switch in the OFF position, trace wiring and varify function in accordance with the Cessna Service Manual procedures.

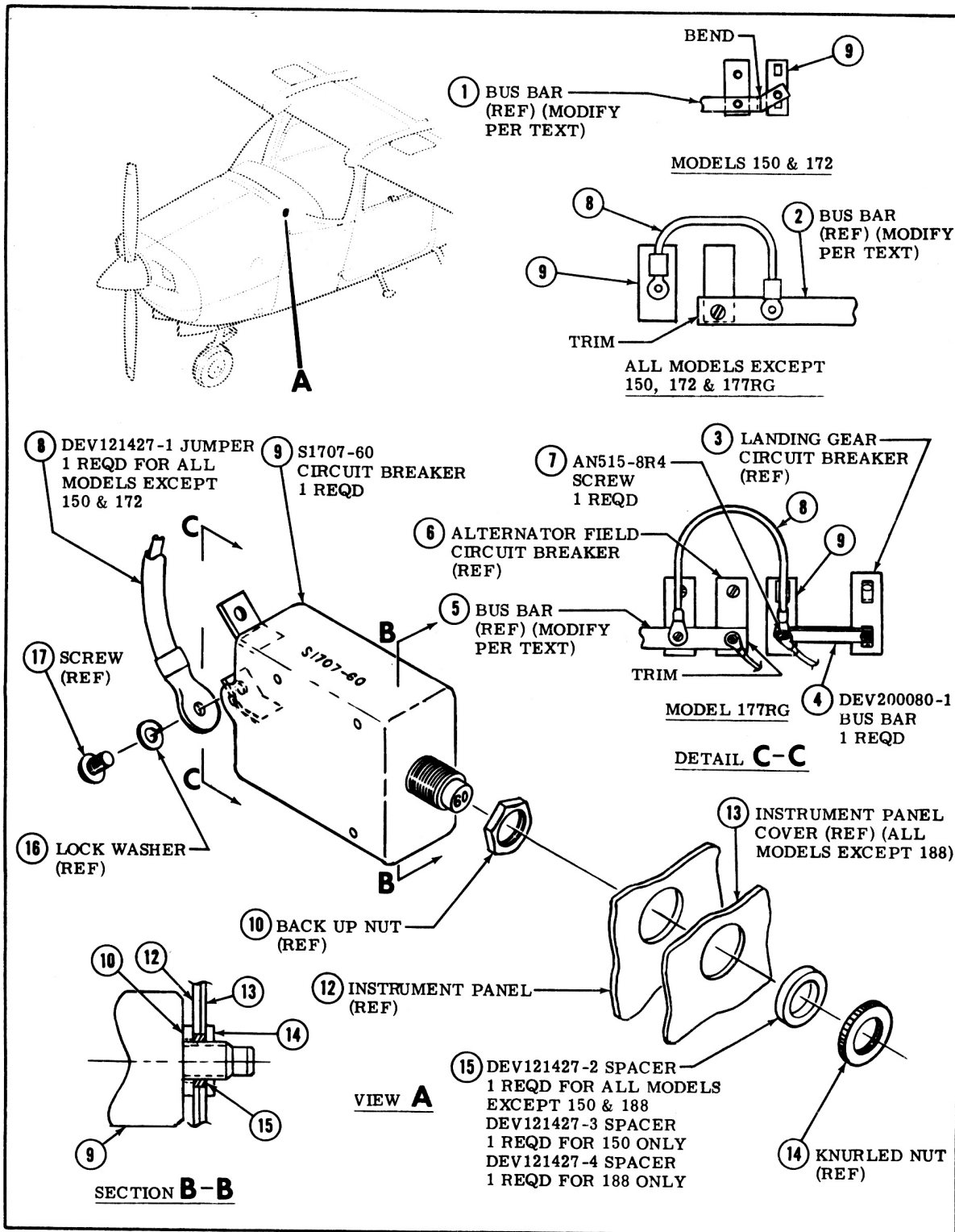


Figure 1. Circuit Breaker Replacement.